

**September, October and November 2012  
Calendar**

**Sept.**

3	Labor Day	
7-8	Performance - <i>Remember Me?</i>	8:00 PM
9	Performance - <i>Remember Me?</i>	2:00 PM
10	Board Meeting	6:00 PM
11	Auditions - <i>Cat's Cradle</i>	7:00 PM
13-15	Performance - <i>Remember Me?</i>	8:00 PM
16	Performance - <i>Remember Me?</i>	2:00 PM
19	Membership Meeting	7:00 PM
29	Rummage Sale	7:00 AM

**Oct.**

8	Board Meeting	6:00 PM
9	Auditions - <i>Winter Fund Raiser</i>	7:00 PM
31	Halloween!	8:00 PM

**Nov.**

2-3	Performance - <i>Cat's Cradle</i>	8:00 PM
4	Performance - <i>Cat's Cradle</i>	2:00 PM
6	Auditions - <i>Stage Fright</i>	7:00 PM
8-10	Performance - <i>Cat's Cradle</i>	8:00 PM
11	Performance - <i>Cat's Cradle</i>	2:00 PM
12	Board Meeting	6:00 PM
22	Thanksgiving!	

**Theatre Guild of Webster Groves**

517 Theatre Lane  
Webster Groves, MO 63119

Telephone: (314) 962-0876

Website: **Note new address!!** [www.theatreguildwg.org](http://www.theatreguildwg.org)

General Info. Email: [tgwg.info@gmail.com](mailto:tgwg.info@gmail.com)

Tickets: \$15 Adults  
\$12 Students/Seniors

Rates may vary for fundraiser productions.  
Sorry, we do not take reservations.

**Remember Me?**

**Director's Notes**

*Remember Me?* explores two worlds; Reality and Fantasy. Sam Bobrick has taken us on a very funny romp through one woman's mind as she traverses post-empty nest trauma. At the same time, Mary discovers what "could have been" and compares it to the present.

It is my belief that we've all done this on some level, and should be able to ride along on this roller-coaster journey. So, keep your hands and arms inside the vehicle at all times, and we'll find out if that grass really is greener, or if it's just AstroTurf.

Dave Houghton  
*Director*

**Coming Soon! Don't miss the first show of the 86th Season!!**



**Remember Me?**

**By Sam Bobrick  
Directed by Dave Houghton**

**Tickets \$15 Adults  
\$12 Senior and Students**

**September 7-9; 13-16**

**Performance time 8:00 p.m.  
Thursday, Friday & Saturday  
2:00 p.m. Sunday**

All Guild members are invited to attend an  
Opening Night Performance Party - Friday, September 7th

**We hope to see you there!**



Mary Saputo as Mary, Robert Stevenson as Peter,  
and Ray Shea as Brian  
In a scene from *Remember Me?*

*(Photo courtesy of R. Stevens)*

**And now a word from our President . . . . .**

Welcome to another great season at the Theatre Guild of Webster Groves! If you are joining us for the first time, we welcome you to our community theatre "family." We hope you'll feel right at home here. If you've been with us before, this is a season of change for the Guild and we hope you will enjoy the improvements we are making:

- We will now be using paper tickets! This will aid us in better tallying attendance at our performances.
- Our box office has moved! No longer will patrons have to perch precariously on the stairs to buy their tickets. When you arrive, you can head straight to the lobby, just past the soda machine to buy your tickets. Seating will still be open and on a "first come, first served" basis.
- Are you seeing green yet? During the last show of our last season, the audience voted for "Jungle Green" which now graces the walls of our upstairs area.
- Do you have an E-scrip card? The Guild is participating in this fundraising program. Please consider adding us to your card or see a Guild board member for more information on how you can help support us through this program.

It is my pleasure to once again be serving the Guild as President. If you have any questions, comments, or concerns, please let me know. See you at the theatre!

Karen Wood  
President



Peter (Robert Stevenson) entertains Mary (Mary Saputo)



Brian (Ray Shea) schmooze's a sip from Mary (Mary Saputo)

(Photos courtesy of R. Stevens)



**Word Search! Remember Me?**

Mary	O	D	P	V	E	G	I	F	O	O	V	S	D	E	S
Brian	R	R	V	G	P	V	J	R	V	F	A	I	A	V	Y
Marriage	B	H	D	E	H	X	A	V	O	M	J	R	V	O	B
Tired	B	V	T	I	Z	B	C	H	B	T	T	M	E	L	C
Tennis	S	E	Q	X	N	V	R	O	V	S	I	N	H	Y	C
Boyfriend	R	E	Y	U	P	A	B	I	P	J	R	O	O	E	X
Peter	S	D	G	P	H	R	R	U	A	Q	E	I	U	H	A
Fantasy	N	Y	W	A	I	Z	U	Y	Z	N	D	T	G	T	U
Tori	J	M	R	C	I	X	K	Y	S	M	R	O	H	G	R
Ordinary Sunday	Y	X	K	Z	I	R	S	O	G	U	L	V	T	Y	C
Dave Houghton	R	K	Q	O	E	A	R	S	M	W	N	E	O	V	Z
Sam Bobrick	H	Z	D	N	T	O	S	A	O	T	R	D	N	I	J
Love	Q	F	C	N	Y	R	A	M	M	T	M	Z	A	H	C
Devotion	X	P	A	T	E	N	N	I	S	E	P	D	X	Y	N
	C	F	N	K	D	N	E	I	R	F	Y	O	B	D	B

**Join us for our 86th Season!**

**Remember Me?**

Directed by David Houghton  
September 7-9; 13-16, 2012

**Cat's Cradle**

Directed by Debbie Love  
November 2-4; 8-11 2012

**Stage Fright**

Directed by Ray Shea  
January 11-13; 17-20, 2013

**Rabbit Hole**

Directed by Betsy Belanger  
March 8-10; 14-17, 2013

**UTBU**

**"Unhealthy To Be Unpleasant"**

Directed by Hank Crider  
May 3-5; 9-11, 2013

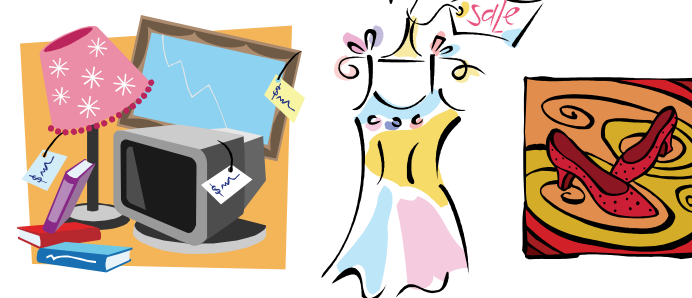
**Gather your stuff!**

**TGWG Annual Rummage Sale**  
**Saturday, September 29th!**  
**From 7:00 a.m. - 2:00 p.m.**

You can drop off your "treasures" any evening after 6:00 p.m. beginning the week of September 24th.

Please no big furniture items. Please limit clothing to specialty items; i.e. coat, fancy dress, shirt, purse or shoes.

\$20 will get you your own table to display your wares!



**Audition Notice! Audition Notice!**

**Cat's Cradle**

**Tuesday, September 11th**  
**7:00 p.m.**

**Show Dates:**  
**November 2-4; 8-11, 2012**

**Director:**  
**Debbie Love**

**Cold readings from script.**  
**No appointment necessary.**

Look for more info on upcoming auditions online  
[www.theatreguildwg.org](http://www.theatreguildwg.org)



**TGWG**  
**Participates in**  
**e-Scrip!**

**An easy way to support our Community Theatre!**

**Update your e-Scrip account and add the Theatre Guild of Webster Groves!**  
**Go to [www.eScrip.com](http://www.eScrip.com) and follow the link under member/supporters. You will need your card number and password.**

**If you are new to e-Scrip and do not have a card, there are cards available in the lobby. You can also pick up a card at any Schnucks courtesy counter.**

**Register your new card on-line following the link under member/supporters. New cards can also be activated by the telephone number listed on the front of the card.**

**Register other cards too !**